

Wirral Heritage Open Days

6th – 16th
September 2018



St. Andrew's Church, Lower Bebington. © Craig Thornber



heritage open days



Wirral Heritage Open Days 2018

Welcome

Heritage Open Days celebrate the country's outstanding architecture and culture by offering free access to properties, many of which are normally closed to the public or charge visitors for admission. Each year thousands of places open their doors and volunteers organise talks, guided tours and events to promote their community's heritage. For information on Heritage Open Days regionally and nationally see

www.heritageopendays.org.uk

Coming closer to home, Wirral's Heritage Open Days programme is organised by the Wirral History & Heritage Association with the support of scores of volunteers. It is Wirral's biggest heritage event and this year covers the eleven day period, 6-16 September, aiming to give visitors and residents alike the chance to enjoy a rich variety of architecture, landscape and history.

The special theme for Heritage Open Days this year is 'Extraordinary Women'.

In part this recognises the centenary of the Universal Suffrage Act, when (some) women finally gained the vote but also celebrates the numerous ways in which women have contributed to their communities over the years. In Wirral we remember especially female lighthouse keepers, stained glass artists, suffragists, philanthropists, political activists and social reformers.

For more information visit the Wirral History & Heritage Association website:

www.wirralhistoryandheritage.org.uk

Downloadable copies of this programme are available on **www.visitwirral.com**

Every attempt has been made to ensure the accuracy of the information in the brochure. However we cannot take responsibility for any discrepancies or last minute changes of programme.

For up to date information please check our website. We hope you enjoy your visits.



Eastham Village. Photo: David Allan

BEBINGTON



St Andrew's Church, Church Road, Bebington CH63 7PG

Sat 8th Sept - church open for tours, 10am-2pm

Tues 11th Sept - church open 10am-3.30pm.

Tours 10.30, 12.30, 2pm.

Fri 14th Sept. Illustrated talk in church on 'Bebington Notables'; 7.30pm.

Sat 15th Sept - church open for tours, 12-3.30pm.

Grade I listed building. Dates from 12th century, Norman arcading, 14th century tower & spire, Misericords, Hatchments, major 19th century extensions. Today the church continues its prime role as a place of worship.

No booking required. Disabled access to church but no wheelchair access to toilets. Refreshments.

Contact: Mrs Karen Davies, 0151 645 6478.

Email: office@standrewsbebington.org.uk

www.standrewsbebington.org.uk

Visits at other times by arrangement. Phone for details.

An interesting collection of buildings and a Park, the gift of philanthropist, Joseph Mayer, goldsmith, art lover and antiquarian, to the people of Bebington, 1866 - 1886.

A fine example of the commitment of one person towards the betterment of a small community.

Cafe on site, serving fresh sandwiches, cakes, and hot and cold drinks.

Contact : Dennis Boyd. 0151 645 6657.

info@jmcp.org.uk



Victoria Hall, Victoria Hall Walk, (off Village Rd), Higher Bebington, CH63 8AB

Local history talks and film screenings in the historical setting of the Victoria Hall, an 'arts and crafts' building erected to commemorate Queen Victoria's Diamond Jubilee of 1897, on land donated by Catherine King, and where The Beatles played in 1962.

Fri 7th Sept: Talk: 'Life in Higher Bebington in the 19th Century' by local history speaker, David Casement.

Doors open 7pm, Start 7.30 / Finish 10pm

Fri 14th Sept: 'Bebington on Film', An evening of screenings, with Swan Movie Makers, looking back over the last hundred years. Rare footage of the different districts of the former Borough of Bebington, established 1937, to include Higher & Lower Bebington, New Ferry, Port Sunlight, Thornton Hough, Bromborough & Eastham. (Since 1974, part of the Metropolitan Borough of Wirral.) Doors open 7pm, Start 7.30 / Finish 10pm.

Admission Free, Booking essential. Donations welcome. Light refreshments available.

Contact: 0151 608 1527.

Email: bookings@victoriahallhrbebington.co.uk



Mayer Hall, The Village, Lower Bebington, CH63 7PL

Sat 2nd, Sun 10th Sept, 1.00 - 4.00 pm.

BIDSTON

Bidston Community Archaeology, Tam O'Shanter Urban Farm, Boundary Rd, Bidston CH43 7PD.

**(Excavation site 50 metres from
Tam O'Shanter Farm)**

Sun 9th Sept, 11.00am to 4pm.

Excavation of Pig Field Site, Tam O'Shanter Farm, aims to investigate dates of occupancy. Earliest dating evidence recovered so far – 17th century pottery shards. Prehistoric use indicated by pieces of worked flint.

We are happy to escort visitors round the site. Surface uneven & at times slippery. Wear appropriate footwear. Unsuitable for wheelchairs.

No booking required. Refreshments available at Tam O'Shanter Farm Cafe.

Email:
bidston-community-archaeology@hotmail.co.uk

For details of activities throughout the year see website:
www.bidstoncommunityarchaeology.org.uk

Bidston Lighthouse and Telegraph Station, Wilding Way, Bidston CH43 7RA.

Thurs 6th, Sun 9th, 1pm – 4pm & Sat 15th Sept 12pm – 3pm.

The world's most inland lighthouse, established at the Bidston Signals Station, 1771, starting a revolution in lighthouse optics. In 1797, Liverpool appointed its first female lighthouse keeper, Elizabeth Wilding, at Bidston. Jane Urmsion was appointed keeper of the Semaphore Telegraph Station in 1827. Lighthouse re-built 1873. Souvenirs and second-hand books on sale.

Fantastic views from lamp room. Children must be 1.06 metres (42 inches) or taller to go up to lamp room. Disabled access to ground floor only.



Limited parking on site. If coming by car, please note only access is via Wilding Way. Bidston Lighthouse opens to the public on Saturday afternoons, during warmer months.

Free admission to ground floor and bookshop. Guided tours to signals & lamp rooms, cost £2.50 (adult), £1 (child). Private tours by arrangement. For up-to-date information about the lighthouse, its history and opening times see: www.bidstonlighthouse.org.uk

Contact: 0151 653 7816.
Email: info@bidstonlighthouse.org.uk

Bidston Observatory, Wilding Way, Bidston, CH43 7RA.

Thurs 6th Sept, 1pm to 4pm, Sun 9th September, 1pm to 4pm, Sat 15th Sept, 12 noon to 3pm.

Three 50 minute guided tours daily, for up to 20 people per tour, also screening of a short film. Unfortunately, we cannot take bookings so tours are on a first come first served basis.



Built in 1866 to measure time, Bidston Observatory initially serviced maritime chronometers, a task reflected in the building's architecture. The observatory is a local treasure, best known for firing the one o'clock gun across the Mersey and inventing a tidal prediction machine that calculated the tide times for the D Day landings.

No disabled access for tour but accessible toilet and film screening.

Bidston Hill Walk. Meet at Tam O'Shanter Farm, Boundary Rd, Bidston, CH43 7PD.

Tues 11th Sept, 11am – 1pm

Walk explores King George's Way, Thermopylae Pass, the original site of Bidston Court (later moved to Royden Park), Bidston Windmill, Observatory & Lighthouse, taking in some of the Rock Carvings before returning to the Farm.

No booking required. Not suitable for people with limited mobility. Refreshments and toilets available at Tam O'Shanter Farm.

Bidston Windmill. Access via footpath from Tam O'Shanter Farm Car Park, CH43 7PD.

Sat. 15th Sept, 10am - 12noon, last entry 11.45am

Grade II* brick built tower mill, erected 1791, to replace wooden peg mill, destroyed by fire. Used to grind corn until 1875. Restored by Wirral Council.

The windmill is approached on foot over uneven ground not suitable for wheelchairs. Disabled access to ground floor only. Upper floors only accessible via steep ladders. Minimum height restriction for upper floors 1.06 metres (42 inches). Children under 11 years must be accompanied by an adult at all times.

Dogs can be minded. No booking required. First come first served. Nearest car parking: Tam O'Shanter Farm, CH43 7PD, Refreshments available at Tam O'Shanter Farm Café.

Email: info@bidstonhill.org.uk



Windmill open to public 10am-12 noon on first Sat of each month, April to Sept. Closed during colder months when bats resume winter residence. Admission free. Donations welcome for Friends of Bidston Hill. For more information see: www.bidstonhill.org.uk

Flaybrick Walk, Flaybrick Memorial Gardens, Tollemache Rd, Bidston.

Meet at Tam O'Shanter Urban Farm, Boundary Rd, Bidston, CH43 7PD.

Sat 8th Sept 11.00am.

One of England's most important cemeteries. Laid out by leading Victorian landscape gardener, Edward Kemp (1817 – 1891). Officially opened 1864. A Grade II* registered historic landscape and Conservation Area.

Guided walk round cemetery, taking approx. 2 hours, led by Friends of the Memorial Gardens.

Disabled access, but note paths are uneven in parts. Stout footwear recommended.

Booking not required. Refreshments and toilets available at Tam O'Shanter Farm.

Contact: Chris Morris 07592 332519.



Flaybrick Chapels Tour. Flaybrick Memorial Gardens, Tollemache Rd, Bidston, CH41 0DG.

Sat 8th 11am – 2pm Mon 10th, Wed 12th, Sat 15th & Sun 16th 2pm – 4pm.

Flaybrick's unusual linked chapels (Anglican and Non-Conformist), designed in mid-Victorian Gothic style by Liverpool architects, Lucy & Littler. Disused and derelict for many years. Following major conservation work to fabric, funded by Wirral Council & Historic England, the interior can now be viewed.

Booking not required.

Contact: Chris Morris 07592 332519.

St Oswald's Church, Bidston Village Road, Bidston, CH43 7QT.

Tues 11th Sept, 11am – 1pm

Church rebuilt 1856. Tower of 1593. Stained glass window, crafted by Morris to a Burne-Jones design. The Reredos - a copy of Leonardo da Vinci's 'Last Supper' by Italian artist Salviati. A memorial wreath, within the church, sent by Queen Victoria to the funeral of her page, the Hon. Percy Cust.

No booking required. Refreshments. Disabled access to church.

Contact: Ron Iveson 0151 378 5835

Email: roniveson@hotmail.com



BIRKENHEAD



Birkenhead Town Hall, Hamilton Square, Birkenhead, CH41 5BR

Sat 8th & Mon 10th Sept, 10.30 am – 3.30 pm.

See inside this monumental Grade II* listed former Town Hall, designed by Christopher Ellison (1832 – 1904) and officially opened 1887. Fitted out in style. Magnificent stained glass. Woodside model on display. Information leaflets available.

No booking required. Disabled access. Refreshments available locally.

Email: contact@wirralhistoryandheritage.org.uk

Birkenhead Central Library, Borough Road, Birkenhead, CH41 2XB

Mon 10th Sept, Start 2.30pm - Finish 3.30pm.

Birkenhead's library service began in 1856. Present building opened 1934, replacing 1909 Carnegie Library, demolished to make way for the Road Tunnel approach.

A 'Behind the Scenes' tour of Birkenhead Library, with some historic facts!

Booking essential. Limited disabled access. Tour unsuitable for those with mobility issues

Email: dianemitchell@wirral.gov.uk



Clifton Road Masonic Temple, 27 Clifton Road, Birkenhead CH41 2SF

Sun 9th Sept, 10am – 3pm.

Grade II listed building, within the Clifton Park Conservation Area. Originally a substantial villa, designed c. 1845, by Birkenhead architect, Walter Scott. A chance to see within the walls of a Masonic building, talk with members on why they joined the organisation and hear of the charitable work they undertake. Also a display by local school children, promoting the history of the area.

Limited disabled access. Refreshments available.

Email: cliftonroadmasonicall@hotmail.com

Birkenhead Park Heritage Walk, Birkenhead Park, Park Drive, Birkenhead, CH41 4HY.

Sat 8th, Sun 9th, Sat 15th, Sun 16th Sept, Start 1pm - Finish 3pm.

Officially opened on Monday 5th April 1847, Birkenhead Park was the world's first publicly funded municipal park. A Grade I listed historic landscape and a Conservation Area, the Park hosts an impressive 146 acres of woodland, lakes, meadow and amenity grassland, all maintained to the highest standard.

Suitable for wheelchair users. Refreshments available in the Visitor Centre. Booking essential.

Contact: 0151 652 5197.

Email: birkenheadpark@wirral.gov.uk



Birkenhead High School Academy WW2 Shelters, 6 Devonshire Place, CH43 1TX (Enter via Sixth Form entrance - Alton Rd. end)

Sat 15th Sept, 10.30am - 12.30pm.

Lottery grant refurbished WW2 underground air raid shelters, built 1940, with financial assistance from the parents to enable school pupils to return from evacuation to Shrewsbury.

Open access to shelter: (no guide) 10.30-11.10am, 12-12.30pm, Booking not required.

Pre-booked guided tours 11.15am and 12.45pm. (Tours last approximately 45 minutes). Booking essential.

Parking - Please note parking only on road in Alton Rd or Devonshire Place or a 5-minute walk from school car parks in Grosvenor Place or Sandyway (signposted). The community car park is for pool and facility users only. Visitors with mobility issues should contact us for more parking details.



No disabled access to shelters which are accessed by a steep flight of stone steps. Disabled visitors can still visit above ground displays.

Visits during school holidays by arrangement for groups of c. 15. Charge payable.

Contact: Kathy Jones, 0151 479 5615.

Email: shelters@birrhs.gdst.net

Birkenhead Priory and St Mary's Tower, Priory St, Birkenhead, CH41 5JH

Thurs 6th, Fri 7th 1pm – 5pm. Sat 8th, Sun 9th 10am – 5pm. Wed 12th, Thurs 13th, Fri 14th 1pm – 5pm. Sat 15th, Sun 16th 10am – 5pm.

Oldest standing building still in use on Merseyside. Scheduled Monument. Founded c.1150 as a Benedictine monastery. Granted right to ferry travellers across the Mersey, 1330. Dissolved by Henry VIII, 1536. Priory church demolished, but other monastic buildings survive. Chapter House now consecrated as a place of worship. Undercroft houses a small Museum.

Adjacent is St Mary's Tower, designed by Thomas Rickman and formerly part of Birkenhead's first parish church, opened 1821. Tower now dedicated to the victims of the submarine Thetis disaster. Climb 101 steps for breath taking views across river to Liverpool and to famous Cammell Lairds shipyard next door. (Children climbing Tower must be accompanied by an adult).

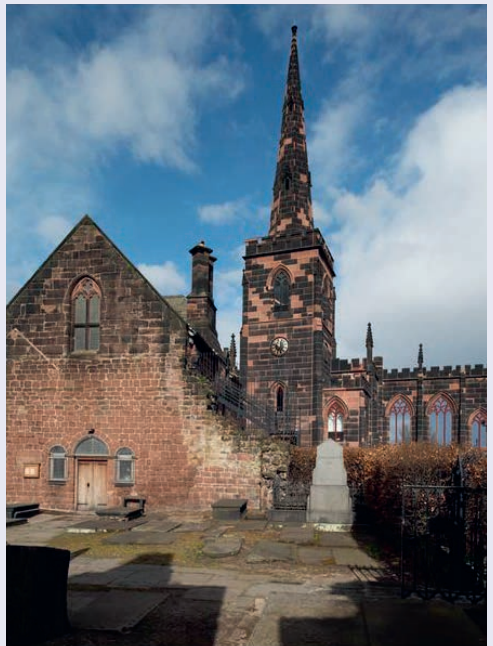
Partial accessibility. No booking required. Refreshments available for purchase.

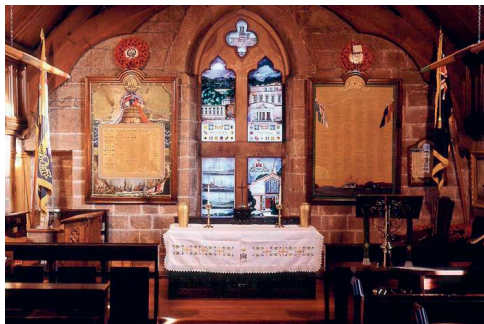
5 minutes walk from Hamilton Square station.

The site is open to visitors, Wed – Sun, throughout the year. Check website for opening hours.

Contact: 0151 666 3537.

www.thebirkenheadpriory.org





Conway Chapel, Scriptorium, Birkenhead Priory, Priory St, Birkenhead, CH41 5JH

*Thurs 6th, Fri 7th 1pm – 5pm. Sat 8th, Sun 9th 10am – 5pm.
Thurs 13th, Fri 14th 1pm – 5pm. Sat 15th, Sun 16th 10am – 5pm.*

The Conway Chapel and Museum is situated above the Chapter House of Birkenhead Priory. It houses memorabilia from Training Ship, Conway, moored in the Sloyne, off Rock Ferry, 1859 – 1941, before being towed to the Menai Straits for safety reasons. While returning to the Mersey for a refit in 1953, Conway grounded and broke her back. She later caught fire and was broken up. The shore based training school on Anglesey continued until 1974.

No booking required. Limited access via 'walking chair', up external staircase. Parking available in Priory car park.

Contact: John Southwood
Email: johnsouthwood@btinternet.com

'Inspirational Women', Rathbone Studio, 28 Argyle Street, Birkenhead CH41 6AE

Tues 11th – Sat 15th Sept, 11am – 2,00pm.

'Inspirational Women'- exhibition commemorating the often overlooked participation of women during WWI - compiled by Rebecca Grindley and Lucy London, Volunteers with the Wilfred Owen Story. Exhibition also features Eleanor Rathbone (1872 – 1946) suffragist, feminist and a social and welfare reformer, and for a time, Britain's most accomplished and capable woman politician. Refreshment available.

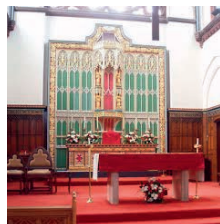


Contact: Janet Holmes 0790 333 7995.

St Joseph's Catholic Church, North Rd/Willowbank Rd, Birkenhead CH42 7JY

Thurs 13th Sept, & Sat 15th Sept, 10am - 4pm.

Grade II listed church, designed by Edmund Kirby. Completed 1900. Constructed of red Ruabon pressed brick with moulded terracotta details. Roof of Westmoreland Green slate. Interior unusual in its bold, richly patterned & colourful decorative scheme. Well



worth a visit. Booking not required. Disabled access.

Contact: Lynn Ireland. Email: lynn.ireland@talktalk.net
www.stjosephsbirkenhead.co.uk

Wirral Archives Service, Cheshire Lines Building, Canning St, Birkenhead, CH41 1ND

Meet in Wirral Archives Service, Lower Ground Floor Conference Room, Cheshire Lines.

Thurs 13th Sept, 2pm – 3pm & 3pm – 4pm.

Two talks about Wirral Archives Service, including an opportunity to see behind the scenes, including the Strong Room where the historical records of Wirral are protected & preserved. Disabled access. Booking essential.

Contact: William Meredith, Archivist,
Wirral Archives Service . 0151 606 2929.

www.archives@wirral.gov.uk

Wilfred Owen Trail, Birkenhead Central Reference Library, Borough Road, Birkenhead, CH41 2XB

Fri 14th Sept, 10am.

Meet at Birkenhead Central Reference Library for introductory talk and to view a display of Wilfred Owen related items.

The walk round the area in which Owen lived during his school years at the Birkenhead Institute is on public footpaths & takes approx. 2½ hours.

Booking required. Appropriate outdoor wear recommended.

Contact: Rob Wood, 07708 853 741.
Email: rewoodassociates@btinternet.com

Wilfred Owen Story, 34 Argyle Street, Birkenhead, CH41 6AW

Thurs 6th, Fri 7th 11am – 2pm and Thurs 13th, Fri 14th Sept, 11am – 2pm.

November 2018 sees the centenary of the end of World War 1, but more poignantly, marks 100 years since the death of war poet, Wilfred Owen (1893 – 1918).

Owen spent his formative years in Birkenhead, attending the Birkenhead Institute Grammar School.

The exhibition provides an insight into his life and times, with items, including family photos and reproductions of personal correspondence which shed light on his youth as well as information on many other WWI poets and authors.

Contact: Janet Holmes 0790 333 7995.



Wirral Transport Museum, 1 Taylor Street, Birkenhead CH41 1BG

Sat and Sun 8th & 9th and 15th & 16th Sept. 1.00 pm - 4.30 pm

Transport Museum open and admission free. Tram rides from Museum to Woodside Ferry Terminal available at £2.00 return (adult) and £1.00 return (child & concessions). Refreshments available.

Contact : Tony Cooper, Museum Manager 0151 647 2128.

Williamson Art Gallery & Museum, Slatey Road, Birkenhead, CH43 4UE Gallery Talk. Sat 8th Sept, 11.30am.

Sally French Greenslade will introduce her collection of fashion accessories from the Victorian period and beyond. Sally is an antiques dealer and expert speaker and originally studied interior design at the Inchbald School of Design in London. She has previously given a talk about the 'Freedom of Fashion' during the Arts and Crafts Period. No booking required.

Della Robbia Gallery Tour. Sat 8th Sept, 2pm.

See the Williamson's unique collection of Della Robbia Ware (1894 – 1906), the most important manifestation of the turn of the century Arts & Crafts Movement on Merseyside. The tour will be led by Julie Carroll of Liverpool John Moores University and co-curator of the Williamson's 2016 'Renaissance to Regent Street: The Della Robbia Pottery' exhibition, which was researched to provide a visual interrogation of the relationship between the Della Robbia Pottery and late 19th century travel to Italy. No booking required.



Star Yachts Celebration. Sat 15th Sept, 11am – 1pm.

The Williamson has extended its popular small display, featuring Birkenhead model yacht manufacturer, STAR YACHTS, to coincide with Heritage Open Days. The Gallery invites visitors on Sat 15th Sept to bring their memories and photographs and any Star Yachts in their possession to share with other pond yacht enthusiasts, former factory staff and members of the Denye family, for an informal celebration of the boats that were "Guaranteed to Sail". No booking required.



All gallery events fully accessible. Changing Places toilet facilities. Refreshments available in Gallery Cafe. Free parking and wifi.

Contact: Gallery Reception 0151 666 3537.

Woodside Guided Walk. Woodside Ferry Terminal, Birkenhead CH41 6DU

Tues 11th Sept, 10.30am – 12.30 pm – finishes Hamilton Square Station.

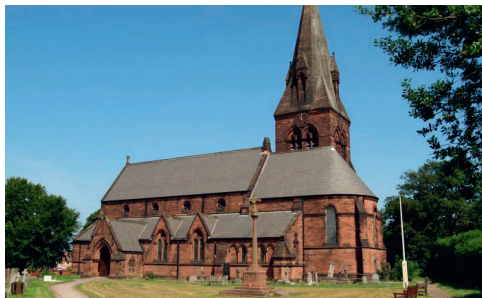
Re-living the docks and the railways as well as the creative side of the Woodside area. An easy walk to include information about the Town Hall, Wilfred Owen and many other fascinating details of this historic area.

Good all weather clothing and sensible shoes recommended. Refreshments available locally.

Wheelchair accessible, only slight slopes. Booking required.

Contact: Helen Penny 0791 4685 099.

Email: wirraltours@gmail.com



BROMBOROUGH POOL

Bromborough Pool Village Walk. Meet at Bromborough Pool Garden Centre, The Green, CH62 4TT

Fri 7th Sept, The walk of 2 miles begins 10.30 am and takes 2 hours.

Bromborough Pool Garden Village, established 1853, is a Conservation Area. An easy guided walk around the village looking at the buildings and housing associated with Prides Candles Works and the earlier history of the area, including a visit to the Old Courthouse site.

Booking not required. Disabled access: Walk is along paths and accessible routes, except for the Old Courthouse site which is not suitable for wheelchairs

Contact: Anne Litherland 0758 755 0060.

Email: anne.litherland@autismtogether.co.uk

www.portsunlightriverpark.com

BROMBOROUGH

St Barnabas Church, Church Square, Bromborough CH62 7AB

Thurs 6th & 13th Sept 11.00 – 3.00pm, Sun 16th Sept,
12 noon – 4.00pm.

Located within the tiny Bromborough Conservation Area, St Barnabas is Grade 2 listed, set in a square with the former Church School and Church Institute. The third Church on the site, with the current building dating from 1864. Important features include two war memorials and memorials to notable local families and windows by Clayton and Bell. Guided tours of the Church and Churchyard (weather permitting), children's trail.

Guided tours. Children's trail. Disabled access.

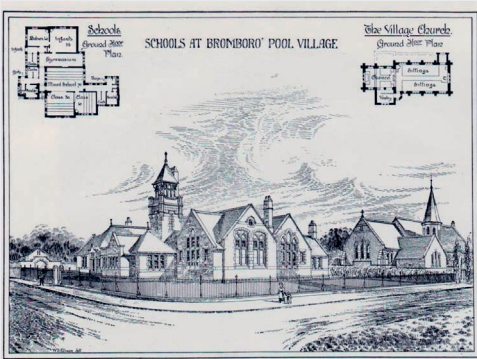
Refreshments available

Contact: Jenny Hope

Email: jenny_hope@ntlworld.com

www.stbarnabasbromborough.org.uk





The Buildings of Bromborough Pool, York Street, Bromborough Pool, CH62 4TZ

Sat 8th Sept, Tours starts 10am, 11am & 12noon.

Meet outside Giles Shirley Hall.

Giles Shirley Hall: a yellow brick building, opened 1858, originally a social hall, used as a school, church and meeting place. Bromborough Pool School: built of local sandstone, 1898, closed as a school in 2007. St Matthew's Church, built 1889-1890 of local sandstone, designed by London architect, Leach.

All Grade 2 listed, the buildings were part of the planned village for Price's Patent Candle Company, one of the earliest examples of a model village and are now used by Autism Together.

No Booking required. Disabled access.

Refreshments available at Garden Centre (for lunches, order in advance 0151 643 1359)

Contact: Anne Litherland 0758 755 0060.

Email: anne.litherland@autismtogether.co.uk

www.autismtogether.co.uk/bromborough-pool

BURTON

RSPB Burton Mere Wetlands, Puddington Lane, Burton, CH64 5SF (Look out for brown sign on A540)

Fri 7th & Sat 8th Sept, 9.30 – 5pm.

Explore this historic landscape including the Mere, once part of Burton Manor estate, home of Henry Neville Gladstone, son of William Gladstone, Prime Minister. Visit the remains of the Iron Age hillfort on Burton Point and discover the estuary's past and the spread of the marshes, following the canalisation of the Dee in 1737.

No booking required. Admission free for Heritage Open Days. Hot and cold drinks and snacks available for purchase.

Mere and wetlands fully accessible. Route to Burton Point unsuitable for those with limited mobility.

Contact: RSPB Burton Mere Visitor Centre.
0151 353 8478.

EASTHAM

Guided Walk round Eastham Village – Meet at Lych-gate, Stanley Lane, Eastham, CH62 0AQ

Thurs 6th, Fri 7th, Thurs 13th, Fri 14th Sept. 10.30am - 12.00 noon approx.

A guided walk through the ancient Domesday village of Eastham, now a Conservation Area, taking a look at some of the buildings and events that have contributed to the village's history over time.

Limited disabled access.

Contact: David Allan - 0151 327 3576.

Email: david.allan132@ntlworld.com

St Mary's Parish Church, Stanley Lane, Eastham, CH62 0AQ

Fri 7th Sat 8th Sept, 10 - 4pm, Sun 9th Sept, 12 - 4pm.

St Mary's will present a collection of icons and floral displays in the oldest part of our Norman Church. A rolling film presentation will celebrate Eastham and the end of WW1. The church guides will be available to answer questions and to offer tours.

Concert – 3-4 pm, Sunday 9 September 2018 – Malcolm Perry and guests. No booking required, Disabled access to all parts of the church but not to graveyard, Refreshments.

Contact: Sue Abraham 0151 334 9216.

Email: s.r.abraham@btinternet.com



ELLESMERE PORT

National Waterways Museum, South Pier Road, Ellesmere Port, CH65 4FW

Sat 8th, Sun 9th Sept, 10.00 – 17.00.



Sited where the Shropshire Union Canal meets the Manchester Ship Canal and the River Mersey, volunteers, funders and Trust colleagues have transformed the old docks into a fantastic family day out. Together with our sister museum in Gloucester Docks, and with your support, our National Waterways Museum, Ellesmere Port, looks after one of the greatest collections of historic boats in the world. Using the latest interactive technology and hands-on exhibitions, visitors can truly experience what it was like to live and work on our waterways over the last 200 years and learn how canals and rivers are still making life better by water today.

No Booking required. Limited disabled access. Refreshments available at the Waterside Cafe.

Contact: 0151 355 5017.

www.canalrivertrust.org.uk/places-to-visit/national-waterways-museum

The Museum is open every day until 4 November 2018, 10.00am - 5.00pm, and Tuesday to Sunday 6 November to 31 March, 10.00am - 4.00pm. (Closed Christmas Day, Boxing Day and New Year's Day).

GREASBY

Greasby Village Walk, Meet outside Greasby Library, Greasby Road, Greasby CH49 3AT

Sat 9th Sept, 3pm – 5pm.

A tour of Greasby, looking at the history of the village through its buildings. Pre booking required. Walk is on public roads & level car parks, except for one section, which involves some steps which can be by-passed.

Contact: Sue O'Neil, 074 1933 7064.

HESWALL

Heswall Walk, Meet at Car Park behind Heswall Hall, CH60 0AF

Sat 8th & Sat 15th Sept, 2.00pm – 3.30pm.

This walk links the Victorian Heswall Top Village to the much older Lower Village through both formal and wild green spaces, with opportunities to admire magnificent views over the Dee Estuary. We will hear about the history of many old buildings, many now long vanished, and the people who lived in them. This walk includes steep hills and some uneven ground across the Beacons, which can be muddy in wet weather.

Booking required.

Email: eventssecretary@heswallsociety.org.uk



HOOTON

Hooton Park Hangars, Airfield Way, Hooton, Ellesmere Port, CH65 1BQ

Access via Junction 6 on M53, second exit off roundabout. Thurs 13th, Sun 16th Sept. 10am – 4pm.

A WWI airfield has 3 listed hangars built in 1917, with a museum depicting the site's history. There are two groups on site: The Griffin Trust which restores vehicles and The Aeroplane Collection which restores aircraft and aero engines. A number of aircraft and engines being restored are on display.

Contact: Colin Schroeder 0151 678 7798 or 07765 077 385.

Email: colinschroeder@hotmail.com



LEASOWE

Leasowe Castle, Leasowe Road, Moreton, Wirral, CH46 3RF

Tues 11th, Wed 12th, Thurs 13th Sept, 10.15 am.

Tour lasts 1 - 1 ½ hrs.

Grade II*. Built by Earls of Derby, c. 1598, Enlarged over time. The Castle has been a sporting lodge, castellated mansion, hotel, nobleman's residence, railwayman's convalescent home and again a hotel. Find out about its history, explore its exterior and glimpse some of its historic rooms.

Pre-booking required. Limited disabled access.

Refreshments available for purchase.

Contact: Linda Cook, 0151 606 9191.

Email: lindacook@leasowecastle.com



Leasowe Lighthouse, Lingham Lane, Moreton, CH46 4TA (Nearest Station Moreton)

Sun 16th Sept, 12 noon – 4pm.

Oldest brick lighthouse in Britain. Grade II Listed. Built 1763. One of four lights erected on Wirral's north coast by Liverpool Docks Committee, two at Hoylake and a lower light at Leasowe, later washed away and replaced by lighthouse on Bidston Hill, itself rebuilt, 1873. Remarkable for having had two female lighthouse keepers, Ann Jones, who died in service in 1867 and Mary Elizabeth Williams, who was still in post when the light was finally discontinued in 1908. Managed by volunteers.

Free entry to ground floor display and gift shop. Charges apply to tour of upper floors, adults £2:50 children £1. Children must be over 1.06 metres to take tour.

No booking required. Disabled access to ground floor.

Refreshments and souvenirs available for purchase.

Nearest toilets Leasowe Rd.

Email: webenquiry@leasowelighthouse.co.uk

LITTLE NESTON

Neston Collieries and Burton Marsh WW2 Decoy Walk. Meet and finish at Harp Inn, Little Neston, CH64 0TB (off Marshlands Road)

Fri 14th Sept, 10am -12.30pm.

Starts with a short walk round the former Neston Coalfield, followed by a walk to the WW2 Burton Marsh bombing decoy bunker, with an explanation of what it was, and how it fitted into the Merseyside defences. It is intended to be a follow-on to the BBC NW "75 Years of the Liverpool Blitz" TV programme, for which I was a programme advisor. (The programme can be viewed on: <https://www.youtube.com/watch?v=93bre8OFIdE>)

Pre-booking required. Disabled Access. Refreshments available locally.

Contact: Phil Pritchard, 0151 336 5973.

Email: g10694@gmail.com

NESS

Ness Gardens, Neston Road, Ness, Cheshire CH64 4AY

Thurs 13th Sept, 10am to 5pm.

Ness Botanic Gardens was born of Liverpool cotton merchant, Arthur Kilpin Bulley's passionate interest in plants and his desire to share that interest with others. He began work on the garden in 1898, creating one of the major botanic gardens in the country. Bulley died in 1942 and in 1948 his daughter, the political activist and philanthropist, the 'extraordinary' Lois Bulley (1901 – 1995) presented the gardens to the University of Liverpool, with an endowment of £75,000, then one of the largest endowments the University had ever received. Today Ness displays plants from all over the world.



Free entry on this day only. No booking required.

Disabled access. Refreshments available in Café.

Contact: 0151 795 6300.

Email: nessgdns@liverpool.ac.uk

www.nessgardens.org.uk

NESTON

Neston Town Trail, Meet outside Neston Parish Church, High Street, Neston, CH64 9TZ

Sat 8th 10am-12pm & Sun 16th Sept - 2 pm- 4pm.

A walk of approximately 1½ miles around Neston town centre, exploring the town's historic buildings and some of its history. Disabled Access. Pre booking required.

Contact: Janet Griffiths, 0151 336 5478.

Email: email janetgriffiths.ncs@gmail.com



St Mary and St Helen Parish Church, High Street, Neston, CH64 9TZ

6th – 8th Sept, 10am – 3.30pm, Sun 9th 2pm – 4pm.

1874 Gothic Revival style Parish Church, renowned for its stained-glass windows. On view are Viking Grave Markers, dating from 930AD and a medieval font, dated 1450 and used for the baptism of Emma, Lady Hamilton, in 1765. Church Discovery Activity, Art & Craft displays, Bell Tower Tours (Bell Tower has limited access) Maximum 8 persons.

Limited disabled access. Refreshments available.

Contact: Terry Abel H: 01513364492 M: 07754 833615.

Email: terryabel@talktalk.net



NEW BRIGHTON

New Brighton Heritage Centre, St James' Church, Albion Street, New Brighton, CH45 9LF

Thurs 6th to Sat 8th Sept, 11am – 1pm, Tues 11th to Sat 15th Sept, 11am – 1pm.

New Brighton Heritage Centre can be found inside St James's Church. It is full of information and memorabilia linked to New Brighton's past, with a timeline telling the story of its rise from a home for Wreckers and Smugglers to the present day.

No booking required. Disabled access. Refreshments.

Contact: Shirley Ashton 0151 639 1674.

Email: shirley.angela07@btinternet.com



Ss Peter, Paul and St Philomena's Church, 7 Atherton Street, New Brighton, CH45 9LT

6th – 8th Sept, 10am – 3.30pm, Sun 9th 2pm – 4pm.



'Dome of Home' - monumental, well-loved landmark, completed 1935. Volunteer-led Guided Tours, Award-winning WWII Audio Tour (Marsh Award 2018) telling the story of how this Church sustained morale and helped the local community during the Blitz of WWII. (Audio Tour can be accessed outside service times on smart phones by scanning QR codes.)

No Booking Required, Disabled Access, Refreshments.

Contact: Anne Archer 07743 235046 .

Email: contactus@domeofhome.org

The church is open every day 8am until 8pm for visitors. Group tours by arrangement email: contactus@domeofhome.org

**St Andrew's United Church,
Rowson Street, New Brighton, CH45 5AR**

Sun 9th Sept, 2pm – 4.30pm.

145 year old church. Interesting interior. Do not be put off by the rather forbidding exterior! No booking required. Disabled access. Guided tours on request. Refreshments.

Contact: Peter Purland.

Email: petepurland@btopenworld.com

www.standrewsunitedchurch.co.uk



**St James Church, Albion Street,
New Brighton, CH45 9LF**

Sat 8th Sept, 10am to 4pm, Sat 15 Sept 10am to 4pm.

A Grade II Victorian Gothic Revival Style building designed by Sir George Gilbert Scott and completed in 1856. Eminent Victorian artist, A.O Hemmings, designed the reredos, murals & roof paintings in the Sanctuary and three stained glass windows. View the magnificent 1833 Bewsher Fleetwood organ in the North Transept.

Booking not required.

Disabled access.

Light refreshments.

Church usually open
Tues – Sat, 11am – 1pm
& Sunday during church
services, 11am – 1pm.
Home to New Brighton
Heritage Centre.

**Contact: Julia Codling
07990 535 312.**

**Email: [juliacodling@
yahoo.com](mailto:juliacodling@yahoo.com)**



**Walk around Magazine Brow Conservation
Area, Vale Park, CH45 1LZ**

Thurs 6th & 13th Sept. Start 2pm finish approx. 3.30pm

Meet outside Vale Park Café.

A circular heritage walk around Magazine Brow Conservation Area. Myths, legends and fascinating facts about this historic area on the banks of the Mersey. Featuring, this year, Edith Eskrigge, suffragist our very own "Extraordinary Woman". Booking essential.

Contact: 0151 638 0069 (Before the Actual Day)

Email: t.irving36@btinternet.com

**Wellington Road Conservation Area.
Meet outside Pilot House, 28 Atherton St.
New Brighton, CH45 2NY**

Sat 8th Sept, 10.30am.

A guided walk, with a talk beforehand, exploring the historic villas and surroundings of old New Brighton. Duration approx. 2 hrs. Pre-booking required. Accessible route. Refreshments.

Contact: Joy Hockey 0151 639 2412.



NEW FERRY

**New Ferry Butterfly Park, Howell Rd,
New Ferry (approach road to Bebington
Station Car Park). Park signed from Bebington
Rd. Access between Aldi (CH62 5BG) & railway
bridge**

Sun 9th September 2pm. Tour takes approx 1½ hrs.

'Industrial legacy to bee & butterfly haven' - The tour will explore the industrial history of this former railway goods yard (brickmaking and railway operations), and how this has contributed to the wildlife diversity of the park. Short walk of only about 600 m, but much to see. Pond-dipping and other children's activities available.

Limited disabled access – lower part of the park is accessible. Tea & cake provided after walk. Booking necessary.

Contact: Paul Loughnane 0151 645 8937.

Email: jpl@liv.ac.uk

www.cheshirewildlifetrust.org.uk

www.wirralwildlife.org.uk



New Ferry Historic Walk. Meet at Bebington Station, CH63 7LA

Sat 15th Sept, 9.30am – 1pm.

A guided walk through New Ferry, describing its fascinating origins as a vacant crossing point of two key Wirral roads, its growth as a key district centre that would later serve the neighbouring Port Sunlight Village, its history of brick-making, whose bricks built both Birkenhead and Liverpool.

Passing the site of the massive explosion of 2017, the walk will meander through New Ferry Park to the shoreline where Brunel's SS Great Eastern met its end, and finish at the stunning Port Sunlight River Park.

The full length of the walk is 3 miles but will take up to 3 hours. (This does not include distance/time needed to walk back to Bebington Station).

No Booking required.

Limited access. Most of the route is suitable for wheelchairs & buggies, but the final leg from Shorefields to Port Sunlight River Park has two tall flights of steep steps to negotiate.

Contact: Mark Anthony Craig 0774 607 3914.

OXTON

Christ Church, Christchurch Road, Oxton, CH43 5RW,

Sat 15th Sept, 11am - 4pm.

Grade II listed church, built 1844 -9, but only consecrated 1854 due to financial problems. Houses famous 'Willis' organ which attracts visitors locally & from abroad. Wilfred Owen & his family, & other notable people worshipped here. WW1 war memorials, one an elaborately carved pulpit.

Free organ recital at 12noon. History displays. Wilfred Owen Display. Updated War Memorial information

Disabled access. Refreshments.

Contact: Administration Office
0151 652 3990.

To arrange visits and for opening hours at other times of the year please phone or see website.

www.christchurchbirkenhead.net



Holy Name of Jesus, 60 Beresford Road, Oxton, CH43 2JB

Wed 12th Sept, 10.30 – 5.00 pm.

Holy Name church opened in 1899. Designed by Edmund Kirby, it retains a warm and friendly atmosphere, and attracts many visitors anxious to see the stained-glass windows made by the 'Extraordinary Woman', Sister Margaret Agnes Rope (1882 – 1953), a Carmelite nun and famous member of the Arts and Crafts movement.

Contact: Hugh Lappin 0151 652 493.



Oxton Guided History Walks

Sat 8th Sept (Arno walk), Wed 12th Sept, (East Walk), Sat 15th Sept (West Walk), Walks start 11am, approx. 2hrs.

The Arno walk begins by notice board adjacent to Sainsbury's petrol station, Prenton, CH42 8PQ.

The East and West walks begin in Oxton Village, CH43 5SF.

Three guided tours of the Oxton area, showcasing its history & development, its architecture and the people and events that have shaped it.

The Arno walk takes in Duck Pond Lane, Birch Rd & Fairview Rd (8th Sept).

The East walk takes in Fairview Rd, South Bank & Arno Rd (12th Sept).

The West walk takes in Village Rd, St Saviour's & Wellington Rd (15th Sept).

(The East walk goes along unmade roads. Please ring in advance and we will do all we can to cater for anyone with a disability).

Pre-booking required. Refreshments available in village.

Contact: 0151 652 0202.

Email: paul.smith437@btinternet.com

Similar walks are held throughout the summer, see Oxton Society website: www.oxtonsociety.org.uk

Photographs and documents relating to the history of Parkgate will be displayed in church. Members of the church will be available to welcome visitors and talk about the building.

No booking required. Disabled access. Refreshments available at nearby cafes.

Email: stthomasparkagte@hotmail.com

www.stthomasparkgate.wordpress.com



PORT SUNLIGHT

Bridge Cottage, 23 Park Rd, Port Sunlight, CH62 4US

Thur 13th Sept, 6.30pm.

Talk: Discover the wonderful history of Port Sunlight's Landscape in an evening talk at Bridge Cottage Community Hub. A Port Sunlight Museum event.

Free to attend. Disabled access, Booking essential.

Email: Kate Daly. k.kearns@portsunlightvillage.com

www.portsunlightvillage.com



PARKGATE

St Thomas' Church, Mostyn Square, Parkgate, CH64 6SL

Sun 9th Sept, 12pm – 5.00pm.

St Thomas's was closed for 16 years and re-opened in 2010. Local community projects, in support of

'The Bishop's Trust', raised the money for the renovation of the 'Fisherman's Church', as it is known locally.

Financial assistance was also given by English Heritage.

Port Sunlight Museum, 23 King George's Drive, Port Sunlight, Wirral, CH62 5DX

Sat 15th Sept, Sun 16th Sept, 10am to 4pm.

Tour: Sat 15th Sept, Explore Port Sunlight and join one of our village walking tours, exploring the rich history of William Lever, Sunlight Soap, architecture and much more. Walking tours will take place throughout the day. Tours last approx. 1hr. Booking essential.

Visit: Sun 16th Sept. Discover Port Sunlight Museum - Free admission on Founder's Day. Join us to celebrate Founders Day – the birthday of our Village founder, William Hesketh Lever and visit Edwardian worker's cottage and receive a warm welcome from our staff in costume.

Tour: Sun 16th Sept. Explore Port Sunlight village by joining a guided tour! Visit the old school room in the Lyceum and step back in time to experience a day in a Victorian school. Explore Bridge Cottage, once the home of William Hesketh Lever. Listen to stories from the village, past and present and don't forget to pick up a slice of birthday cake! Booking essential. Tours last approx. 1hr.

All events Free. For the talk and guided walking tours, booking is essential.

Port Sunlight Museum has its own Tea Room serving hot and cold drinks, hand-baked cakes and light lunches.

Email: Kate Daly. k.kearns@portsunlightvillage.com

Port Sunlight Museum is open daily, see website for details and admission charges.

www.portsunlightvillage.com



Port Sunlight River Park, Dock Road North, Bromborough CH62 4TQ

Meet at River Park car park

Fri 14th Sept, 10.30am .The 2½ mile walk takes approx. 1½ hrs.



Tour: Past, Present and Future at Port Sunlight River Park. The park, opened August 2014, was formerly a landfill site and location of Bromborough Dock. Learn about the history and future management of this greenspace with its amazing views of Wirral, North Wales and the Liverpool skyline. The gentle walk will be jointly led by Biffa and Autism Together staff.

No Booking required

Disabled parking. Footpaths suitable for wheelchairs but some slopes. Please call to check suitability.

Contact: Anne Litherland 0758 755 0060.

Email: anne.litherland@autismtogether.co.uk
www.portsunlightriverpark.com

ROCK FERRY

Rock Park Walk – Meet at New Ferry Pier Terminal at junction of the Dell & New Ferry Rd, New Ferry, CH62 1DA

Thurs 6th Sept - 10.30am & 1.30pm.

A walk around Rock Park, highlighting its social history & significance. Designated a Conservation Area in 1979. Estate laid out by Joseph Bennison, 1837. Now comprises 36 houses of different styles & all Grade 2 listed.

Also surviving are the old Rock Ferry pier & listed stone slipway.

The New Ferry - Rock Ferry coast is designated an SSSI (Site of Specific Scientific Interest). Moored close by in the Mersey were once the training ships "Conway" & "Indefatigable" & the reform ships "Akbar" & "Clarence".



WALLASEY

Holy Apostles and Martyrs' Parish Church, St George's Road, Wallasey, CH45 6TU

Sat 15th Sept & Sun 16th Sept 2pm - 4pm.

Grade II* church, designed by Liverpool architect F. X. Velarde and described as the best example of his work. Round the exterior are sculptures of the English Martyrs. Brown and silver interior. Opened 1953.

No booking required. Disabled access and facilities. Refreshments.

Point unsuitable for those with limited mobility. No dogs allowed, except registered assistance dogs

Contact: Tony Mossman

Email: tonymossman@hotmail.com

Walks last 1½ - 2 hours and finish at The Refreshment Rooms, Bedford Rd East, Rock Ferry, CH42 1LS.

Booking required. Accessible route. Refreshments can be purchased at end of walk.

Contacts: Su Thomson, 0151 645 1088.

Wallasey Masonic Hall, Manor Road, Wallasey, CH45 7LU

Sat 8th & Sun 9th Sept 9.00am to 4.30pm.

Opened in 1911 as a purpose built Masonic Hall and designed by J W B Harding, FSA Architect. The interiors of the Grand Temple and the principal function suite are all original to 1911. The second dining room and Lesser Temple date from 1937 and were designed by William P Horsburgh Architect FRIBA.

Booking not required. Disabled access. Guided tours available.

Contact: Alisdair M Macdonald.

Email: secretary@wallaseymasonichall.co.uk

Visits at other times by prior arrangement with Alisdair M Macdonald.

THORNTON HOUGH



St George's United Reformed Church, St George's Way, Thornton Hough, CH63 1JJ

Sat 9th Sept - 2pm. The walk of 2 miles takes 2 hours.

Grade II* sandstone church. 1906-7. Designed for Lord Leverhulme by J Lomax Simpson in Norman style. Key feature of the Conservation Area. Interior has impressive range of carvings in Romanesque style. Capitals have numerous elaborate designs, some mythical, some classical and some depicting Biblical scenes.

No booking required. Disabled access. At other times church can be opened to groups by prior arrangement.

Contact: Tony Swarbrick 07769 966 484.

Email: stgeorgesurcth@gmail.com



St Hilary of Poitiers Church, Claremont Road, Wallasey CH45 3NH

Sat 8th Sept, 10am to 4pm, Sun 9th Sept, 1.00 pm to 4pm.

St. Hilary's Church, dedicated in 1859, has a fine setting, high above Wallasey, with views across to Wales. Beautiful stained glass. Willis organ. The Old Tower, dating from 1530, will be open to view with the original Norman Font.

Bacon Butties on sale from 12:00pm -2:00pm on Saturday and from 1:00pm- 2:00pm on Sunday. Guided visits to the Bell Tower will be held every hour from 11.00am - 3:00pm on Saturday and at 1:00pm, 2:00pm and 3:00pm on Sunday.

No booking required. Disabled access, except to Bell Tower.

Contact: 0151 638 5241.
www.sthilarywallasey.org.uk



The Chapel, Rake Lane Cemetery, Rake Lane, Wallasey CH45 5DE

Sun 9th Sept, 2.00 to 4.00pm.

The Chapel first opened 1882 but in recent years fell into disrepair. In 2009 it became the church of St Elisabeth the New Martyr. Beautifully renovated and now a Russian Orthodox Church. Available for interdenominational funerals and also licensed for weddings.

Guided walks around the cemetery lasting approximately 30 minutes. Meet at cemetery chapel. No booking required. Disabled access.

Contact: John & Diane Robinson, 0151 639 4231.
Email: Jonandi1@btinternet.com

Wallasey Central Library, Earlston Road, Wallasey CH45 5DX

Thur 6th Sept, 2.30 – 4pm.

Talk 'The History of Wallasey Central Library' by Diane and John Robinson; 2.30pm, followed by a tour of the library, led by the librarian.

Booking required. Refreshments available

Contact: 0151 639 2334
Email: elainewilson@wirral.gov.uk
or book in person at library.



The Wallaseyans' Club, 140/142 Grove Road, Wallasey, CH45 0JF

Sun 9th Sept - 2 pm to 5 pm.

Originally owned by the Billington family and, later, private school, the buildings housed service personnel during the Second World War and are now the Wallaseyans' Club. The Wallasey Grammar School archives are stored here and will be on display during the event, which will also include tours of the buildings.

Disabled access (ramp at side of building). Parking at rear of building. Refreshments available.

Contact: Secretary, The Wallaseyans' Club,
0151 639 2832.

Email: wallaseyansmail@gmail.com



Interior decoration by the Bromsgrove Guild of Applied Arts, including works by Walter Gilbert, Bernard Sleigh and Benjamin Creswick. The main feature is the Della Robbia panel by Harold Rathbone. Formerly a Unitarian church, now under the care of the Historic Chapels Trust. Booking not required.

No disabled access at present.

Contact: Rev Chris Goacher, 0787 618 4656.



Wallasey Town Hall, Brighton Street, Seacombe, CH44 8ED

Fri 14th Sept, 2pm - 4pm.

Monumental Grade II listed building, designed for Borough of Wallasey by Briggs, Wolstenholme & Thornley. Foundation stone laid 1914, by George V. Served as Military Hospital in WWI. Officially opened as Wallasey Town Hall, 1920. Now main centre for Wirral Council. Talk and tour of Council Chamber, Reception Room & recently refurbished Civic Hall. Tea in Mayor's parlour. Well worth a visit.

Pre-booking necessary as numbers limited. Meet 1.55pm and wait in Town Hall Reception Area

Contact : Joy Hockey, 0151 639 2412.



Wallasey Memorial Church, Manor Road, Wallasey CH44 1DA

Sat 8th Sept, open 12 noon - 4pm.

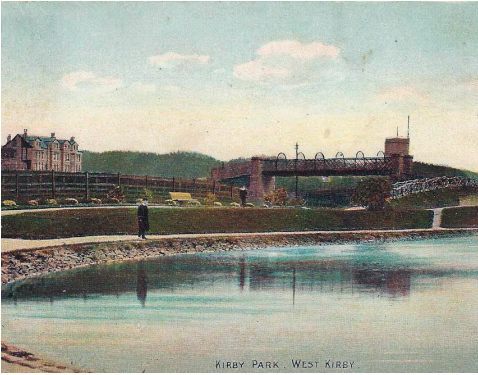
Sat 8th Sept, open 12 noon - 4pm. 1pm **Talk** by Rev Chris Goacher on 'Elizabeth Gaskell; Author and Unitarian.'

Sun 9th, open 2 - 4 pm.

Sat 15th, open 12 - 4pm. 1pm **Talk** by Rev Chris Goacher on 'Gertrude Von Petzold, the first woman to be trained and to work as a Minister in England.'

Sun 16th, open 2 - 4pm.

Grade II listed Arts & Crafts church, designed by Ware and Rathbone of Liverpool and built by James Merritt in 1899.



WEST KIRKBY

Ashton Park Walk, Meet at St Bridget's Centre, St Bridget's Lane, West Kirby, CH48 3JT

Sat 8th Sept, 10.00am & 12noon. Each tour lasts 75 minutes.

West Kirby Park 'opened' in 1901 without ceremony. Its development was characterised by delay and overspend. The original park was only half the size intended and the Upper Park was developed more slowly. Later known as 'Ashton Park', it changed significantly over the years. Take a guided walk round the park and learn about its history and development and about the Ashton family who gave the park its name.

Booking required. Chosen route allows for disabled access. Refreshments available in nearby St Bridget's Centre.

Contact: Secretary, Martin Harrison
0151 625 8535
Email: martinandsueharrison@gmail.com

West Kirby Museum, St Bridget's Centre, St Bridget's Lane, West Kirby, CH48 3JT

Sat 8th & Sat 15th Sept, 10.00am to 4.00pm.

Founded in 1892 and totally refurbished and extended, the Museum now houses fragments of 10th century stone sculpture and some later medieval stonework in one room and in the other follows the history of West Kirby Old Village, St Bridget's Church and St Bridget's School. Changing temporary exhibitions throughout the year. In September the theme will be '1878 - The Railway comes to West Kirby'.

Email: info@westkirbymuseum.co.uk
www.facebook.com/WKMuseum

St Bridget's Church, St Bridget's Lane, West Kirby, CH48 3JT

Sat 8th & Sat 15th Sept, 10am - 4.00pm.

An Anglican church with a history of worship dating back 1000 years. Substantially rebuilt 1869-70. Some medieval masonry survives, particularly in the north chancel aisle and vestry. 15th - 16th century tower. Home to a rare Norse Hogback stone. Stained glass windows, painting over the chancel arch and iron chancel screen, all by C.E.Kempe.

No Booking required. Disabled access.
Refreshments in Church Centre.

10 minutes' walk from West Kirby station.

Contact: Parish Office: Mon - Fri, 09:00 - 12:00
0151 625 2739.
Email: office@stbridgetschurch.org.uk



West Kirby Old Village Walk Meet at St Bridget's Church Iychgate, Church Rd, West Kirby, CH48 3JT

Sun 16th Sept 10am - 11am.

A short circular walk through the old village of West Kirby, once a bustling community with farms, inns and shops. Some buildings survive from the 17th century. A designated Conservation Area. Walk lasts 1 hour.

Booking required. No Disabled Access, narrow pavements - not suitable for pushchairs or wheelchairs.

Contact: Heather Chapman.
Email: heatherhistory11@gmail.com

WOODCHURCH

**Holy Cross Church, Church Lane,
Woodchurch, CH49 7LS**

Sat 8th Sept, 12 noon – 3pm, Fri 14th Sept, 11am – 3pm.

Sat 15th Sept, 10am – 4pm, Sun 16th Sept, 3pm-5pm.

Grade II* listed medieval church, enlarged, altered and enhanced, serving the people of the 21st century. Items of interest are wood carvings, charity board of 1741, part of a Saxon wheel cross and Kempe stained glass window.

Sat 15th Sept - 'Have a go' at bell-ringing - Booking Required. Climb tower for views - Booking Required. Bring your Teddy and watch it parachute from the tower - Register on day, Children's activities. Light a candle for a loved one.

Tower Visits / Bell Ringing: No children under 8. All children under 16 to be accompanied by an adult. Tower reached via over 100 steep steps.

Unsuitable for those with mobility problems, pregnant or with health issue. No dogs in tower.

Disabled access except to tower. Refreshments.

Church normally open Wednesdays, 11am to 12 noon and first Sat. of month, 9.30am to 11am.

**Contact: Sue Treanor, Parish Administrator
(Mon-Thurs 9.30am - 12 noon) 0151 677 5352.
Email: parishoffice@holycrosswoodchurch.uk**

www.holycrosswoodchurch.uk

**St Michael and All Angels Roman Catholic
Church, New Hey Road, Woodchurch,
Birkenhead, CH49 5LE**

Sat 8th Sept, 10am – 4pm, Sat 15th Sept, 10am - 4pm.

The parish of St Michael and All Angels was founded to serve the Catholic community of Woodchurch and Prenton in 1952. The church, designed by Richard O'Mahony of the F. X. Velarde Partnership was commissioned in 1962 and opened in September 1965.



The building was awarded an RIBA Bronze Medal in 1967. Guides will be on hand to explain the features and history of the Church building.

Contact: saintmichaelandallangels@hotmail.com

DATES FOR YOUR DIARY: 2018 - 2019

Saturday 3rd November 2018 : 9:30am

CHESHIRE HISTORY DAY

Northwich Memorial Court,

Chester Way, Northwich, CW9 5QJ

'A Cheshire History of Crime and Punishment'.

Speakers: to be confirmed

Details on : www.cheshirehistory.org.uk

Saturday 9th March 2019 : 10am - 4pm

WIRRAL HISTORY AND HERITAGE FAIR

Birkenhead Town Hall

Hamilton Square, Birkenhead, CH41 5BR

Explore Wirral's fascinating Past!

History & Heritage Stalls, Family History,

Local Historical Societies, Memorabilia,

books & postcards.

Free admission. All welcome.

Details on :

www.wirralhistoryandheritage.org.uk

Events Calendar: 2018

Location	Site name	Page	Thur 6th	Fri 7th	Sat 8th	Sun 9th	Mon 10th	Tues 11th	Wed 12th	Thur 13th	Fri 14th	Sat 15th	Sun 16th
Bebington	St Andrew's Church	3			●			●			●	●	
Bebington	Mayer Hall & Park	3	●							●		●	●
Bebington	Victoria Hall	3		●							●		
Bidston	Bidston Community Archaeology	4				●							
Bidston	Bidston Lighthouse	4	●			●						●	
Bidston	Bidston Observatory	4	●			●						●	
Birkenhead	Bidston Hill Guided Walk	4						●					
Bidston	Bidston Windmill	5										●	
Bidston	Flaybrick Cemetery Guided Walk	5			●								
Bidston	Flaybrick Chapels Tour	5			●		●		●			●	●
Bidston	St Oswald's Church	5	●										
Birkenhead	Birkenhead Central Library	6					●						
Birkenhead	Birkenhead Park Heritage Walk	6			●	●						●	●
Birkenhead	Birkenhead Town Hall	6			●		●						
Birkenhead	Clifton Road Masonic Temple	6				●							
Birkenhead	Birkenhead High School Academy WWII Shelters	7										●	
Birkenhead	Birkenhead Priory & St. Mary's Tower	7	●	●	●	●			●	●	●	●	●
Birkenhead	Conway Chapel, Birkenhead Priory	8	●	●	●	●				●	●	●	●
Birkenhead	Rathbone Studio, Argyle St, 'Inspirational Women'	8						●	●	●	●	●	●
Birkenhead	St Joseph' RC Church	8								●		●	
Birkenhead	Wirral Archives Service	8								●			
Birkenhead	Wilfred Owen Guided Walk	8									●		
Birkenhead	Wilfred Owen Story (Argyle St.)	9	●	●				●	●	●	●	●	
Birkenhead	Wirral Transport Museum	9			●	●						●	●

Location	Site name	Page	Thur 6th	Fri 7th	Sat 8th	Sun 9th	Mon 10th	Tues 11th	Wed 12th	Thur 13th	Fri 14th	Sat 15th	Sun 16th
Birkenhead	Williamson Art Gallery	9			●							●	
Birkenhead	Woodside Guided Walk	10						●					
Bromborough	St Barnabas Church	10	●							●			●
Bromborough Pool	Bromborough Pool Village Walk	10		●									
Bromborough Pool	Buildings of Bromborough Pool	11			●								
Burton	RSPB Burton Mere Wetlands	11		●	●								
Eastham	Eastham Village Guided Walk	11	●	●						●	●		
Eastham	St. Mary's Church, Eastham	11		●	●	●							
Ellesmere Port	National Waterways Museum	12			●	●							
Greasby	Greasby Village Guided Walk	12										●	
Heswall	Heswall Heritage Guided Walk	12			●							●	
Hooton	Hooton Park Hangers	12								●	●	●	●
Leasowe	Leasowe Castle Guided Tour	13						●	●	●			
Leasowe	Leasowe Lighthouse	13											●
Ness	Ness Gardens	13								●			
Little Neston	Neston Collieries & Burton Marsh WWII Decoys	13									●		
Neston	Neston Town Trail	14			●								●
Neston	St Mary & St Helen Church	14	●	●	●	●							
New Brighton	New Brighton Heritage Centre	14	●	●	●			●	●	●	●	●	
New Brighton	Ss Peter, Paul & Philomena Ch.	14										●	
New Brighton	St Andrew's United Church	15				●							

Location	Site name	Page	Thur 6th	Fri 7th	Sat 8th	Sun 9th	Mon 10th	Tues 11th	Wed 12th	Thur 13th	Fri 14th	Sat 15th	Sun 16th
New Brighton	St James' Church, Albion Street	15			●							●	
New Brighton	Magazines Brow Conservation Area Guided Walk	15	●							●			
New Brighton	Wellington Road Conservation Area Guided Walk	15			●								
New Ferry	New Ferry Butterfly Park	15				●							
New Ferry	New Ferry Historic Walk	16										●	
Oxton	Christchurch, Oxton	16										●	
Oxton	Holy Name of Jesus R.C.Church	16							●				
Oxton	Oxton Guided Walks	17			●				●			●	
Parkgate	St. Thomas' Church	17				●							
Port Sunlight	'Port Sunlight Landscapes' Talk	17								●			
Port Sunlight	Port Sunlight Museum events	18										●	●
Port Sunlight	Port Sunlight River Park Walk	18									●		
Rock Ferry	Rock Park Guided Walk	18	●										
Thorton Hough	St. George's URC Church	19			●	●						●	●
Wallasey	Holy Apostles & Martyrs Church	19										●	●
Wallasey	Wallasey Masonic Hall	19			●	●							
Wallasey	St. Hilary of Poitiers Church	20			●	●							
Wallasey	Rake Lane Cemetery & Chapel	20				●							
Wallasey	Wallasey Central Library	20	●										
Wallasey	The Wallaseyans' Club	21				●							
Wallasey	Wallasey Memorial Church	21			●	●						●	
Wallasey	Wallasey Town Hall	21									●		

Location	Site name	Page	Thur 6th	Fri 7th	Sat 8th	Sun 9th	Mon 10th	Tues 11th	Wed 12th	Thur 13th	Fri 14th	Sat 15th	Sun 16th
West Kirby	Ashton Park Guided Walk	22			●								
West Kirby	West Kirby Museum	22			●							●	
West Kirby	West Kirby Old Village Walk	22											●
West Kirby	St Bridget's Church	22			●							●	
Woodchurch	Holy Cross Church	23			●						●	●	●
Woodchurch	St Michael & All Angels Church	23			●							●	



Wirral History and Heritage Association

Wirral Heritage Open Days, 2018, is organised by the Wirral History and Heritage Association. WHHA is a voluntary organisation open to anyone interested in the history and heritage of Wirral. Its purpose is to provide an umbrella service for both individuals and for the peninsula's numerous local history groups and societies.

In addition to organising the local Heritage Open Days, the Association runs Wirral's Annual History Fair each March and through its website – www.wirralhistoryandheritage.org.uk - provides details of Member Organisations, Local History Speakers, Local History Classes and Local History events, talks and tours.

THANK YOU

In putting together the 2018 Wirral Heritage Days programme, WHHA would like to thank all its participants, in particular:

The Friends Groups of Ashton Park, Bidston Hill, Flaybrick Memorial Gardens, HMS Conway, Leasowe Lighthouse, Mayer Hall & Park, Rake Lane Cemetery, Rock Park Conservation Area, Vale Park, Wellington Road Conservation Area & West Kirby Museum.

St Andrew's Church, Bebington; St Andrew's United Church, Wallasey; St Barnabas Church, Bromborough; St Bridget's Church, West Kirby; Christ Church, Oxton; St George's URC, Thornton Hough; St Hilary's, Wallasey; Holy Apostles & Martyrs Church, Wallasey; Holy Cross Church, Woodchurch; Holy Name of Jesus, Oxton, St James' Church, New Brighton; St Mary's Church, Eastham; St Mary and St Helen's, Neston; St Michael & All Angels, Woodchurch, Ss Peter, Paul & Philomena Church, New Brighton; St Thomas' Church, Parkgate.

Birkenhead High School Academy, Birkenhead Priory, RSPB Burton Mere Wetlands, National Waterways Museum, New Brighton Heritage Centre, Ness Botanic Gardens, New Ferry Butterfly Park, Port Sunlight Museum, Port Sunlight River Park, Williamson Art Gallery and Museum, Wirral Archives Service, Wirral Libraries, Wirral Parks & Countryside, Wirral Transport Museum.

Bidston Community Archaeology, Bidston Lighthouse, Bidston Observatory, Clifton Road Masonic Temple, Hooton Park Trust, Neston Civic Society, Oxton Society, the Rathbone Studio, Wallasey Memorial Church, Wallaseyans' Club, Wallasey Masons, The Wilfred Owen Story.

In addition the Association would like to thank the many individual speakers and walk leaders who have volunteered their time to contribute to the programme.

www.wirralhistoryandheritage.org.uk